

Wireless Internet Access

(Windows Vista™ Edition)

Regulations

Before connecting to the network, you must familiarise yourself with the regulations for computing use at the Universities at Medway. You are reminded that when using the Universities at Medway computing facilities you are bound by the Regulations for the Use of Computing Facilities at your home institution.

The full set of regulations can be viewed at: <http://campus.medway.ac.uk/library/it/policies.php>

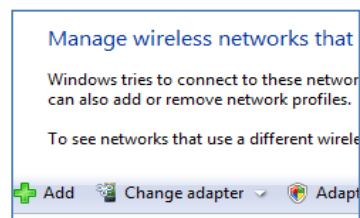
The JANET Acceptable Use Policy at: <http://www.ja.net/company/policies/janet-aup.html>

Setting up wireless

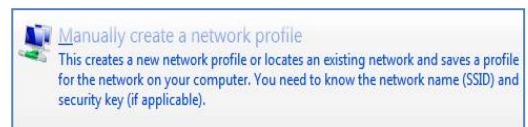
Initial setup

- Check that your wireless adaptor is turned on (either a switch on the side of the laptop or a key on the keyboard with a wireless symbol - usually a light indicates when it is on)

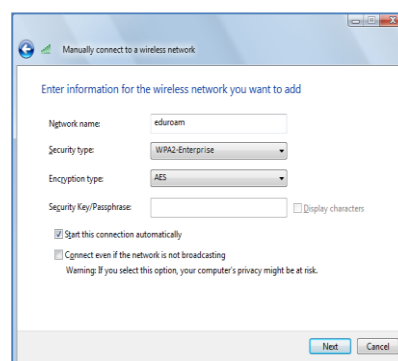
- Click on the **Start** button 
- Click **Control Panel**
- Click **Network and Internet**
- Click **Network and Sharing Center**
- From the **Tasks** menu, click **Manage wireless networks**



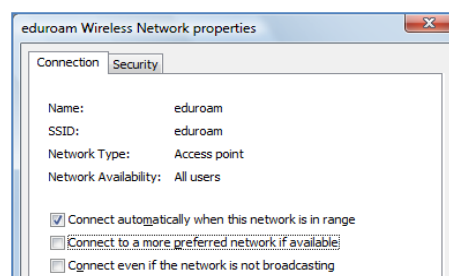
- Click **Manually create a network profile**



- In the Network name box, type **eduroam**
- From the **Security type** drop-down list, select **WPA2-Enterprise**
- Ensure **Encryption type** is set to **AES**
- Leave the **Security Key/Passphrase** box empty
- Tick the **Start this connection automatically** box
- The **Connect even if the network is not broadcasting** box should remain unticked
- Click **Next**



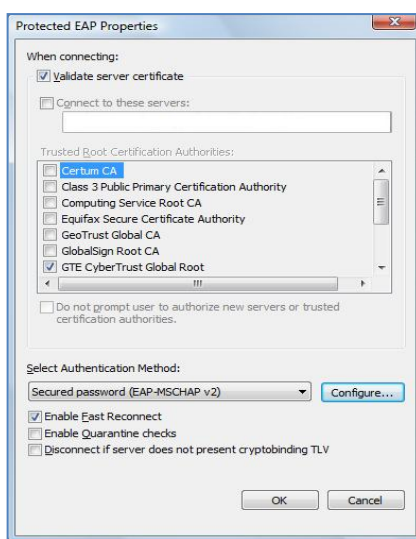
- Click **Change connection settings**
- Tick the **Connect automatically when this network is in range** box
- Untick the **Connect to a more preferred network if available** and **Connect even if the network is not broadcasting** boxes
- Click on the **Security** tab



- Ensure that **Security type** is set to **WPA2-Enterprise**
- Ensure that Encryption type is set to **AES**
- Ensure that **Choose a network authentication method** is set to **Protected EAP (PEAP)**
- Untick the box marked **Cache user information for subsequent connections to this network**
- Click the **Settings** button

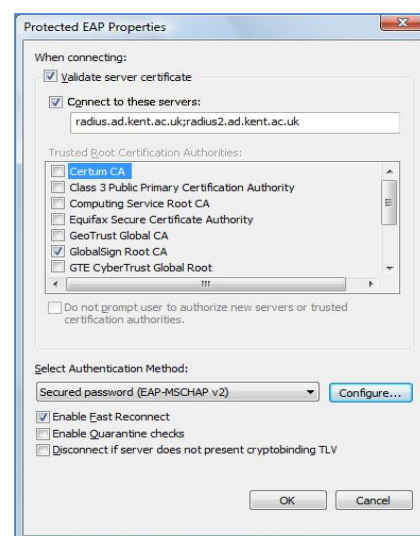
Greenwich and Christ Church users

- Tick the box **Validate server certificate**
- In the **Trusted Root Certification Authorities** section tick the box **GTE CyberTrust Global Root**

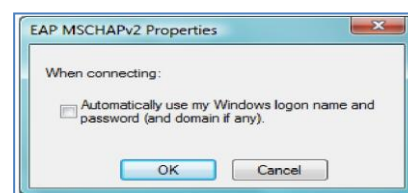


Kent users

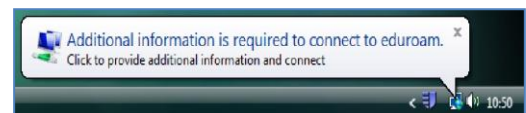
- Tick the box **Validate server certificate**
- Tick the box **Connect to these servers**
- Enter the following:
radius.ad.kent.ac.uk;radius2.ad.kent.ac.uk
- In the **Trusted Root Certification Authorities** section tick the box **GlobalSign Root CA**



- Under **Select Authentication Method**, select **Secured password (EAPMSCHAPv2)**
- Click on **Configure**
- Untick **Automatically use my Windows logon name and password (if any)**
- Click **OK** until you return to the **Manually connect to a wireless network** window



- Click on **Connect to ...**
- Select **Eduroam** as the network to connect to and click **Connect**
- Click on the bubble **Additional information is required to connect to Eduroam**



- Enter your university computer account details (i.e. **ab123@gre.ac.uk**, **ab12@kent.ac.uk** or **abc12@cant.ac.uk** for Greenwich, Kent and Christchurch users) followed by your password

